

SecuritEase® CHESS Gateway

The SecuritEase® CHESS Gateway allows you to transparently integrate your existing business systems with ASX CHESS.

Replace less functional legacy CHESS interfacing systems with the SecuritEase® CHESS Gateway and get; a feature rich and easy to use interactive CHESS messaging user interface, a simple programming interface to link the SecuritEase CHESS Gateway into your in-house developed systems and a quick and easy CHESS message batch file loading system.

The superior modern technology used in the SecuritEase® CHESS Gateway and the responsive service offered by the SecuritEase team mean lower cost, higher functionality and shorter time to market for new initiatives.

The SecuritEase® CHESS Gateway is one part of the integrated SecuritEase® ASX product set. The other components are the SecuritEase® System for Brokers and the SecuritEase® System for Non Market Participants (NMP).

Seamlessly migrate from the entry level SecuritEase® CHESS Gateway to the Broker or NMP systems without changing the software platform. These systems deliver all of the Gateway functionality together with substantially more post CHESS communication processing (like full HIN management, automated corporate actions, DvP settlement) and reporting.

Interactive Use

The SecuritEase® CHESS Gateway provides a full graphical user interface that can be used to manually enter and send any CHESS message.

Helpful hint tool tips are available to guide you through data entry. Field validation eliminates entry errors. Mandatory fields are identified and must be completed correctly before a message can be sent.

Alternatively use the SecuritEase® CHESS Gateway drag-and-drop function to effortlessly load message batch files.

Input data is checked on a field by field basis and helpful messages are issued when correction is necessary.

Multi-user access to the SecuritEase® CHESS Gateway is governed by a comprehensive roles-based security system. This allows you to provide CHESS access where it is needed but manage any associated risk.

Double click on the Audit Log screen to drill into the full CHESS message conversation.

Audit logs are kept for the message traffic in both directions.

The full details of each message sent or received are recorded along with individual user names for compliance and monitoring purposes. The high capacity database allows for a permanent on-line record to be kept.

Double click on an audit log entry to drill down and see the full CHESS conversation associated with that message.

Process messages and manage CHESS activities for multiple subsidiaries within your company group with the SecuritEase® CHESS Gateway one to many AIC / UIC capability.



Application Programming Interface

The SecuritEase® CHES Gateway provides a secure, high level, simple Application Programming Interface (API) that you can use to bring CHES integration to your in-house developed applications. The programming interface has both API and message (XML) alternatives and is compatible with most software development environments.

In addition, the SecuritEase® CHES Gateway can automatically populate and depopulate interfacing tables in your SQL database as a means of communication between your in-house applications and the ASX CHES Settlement System.



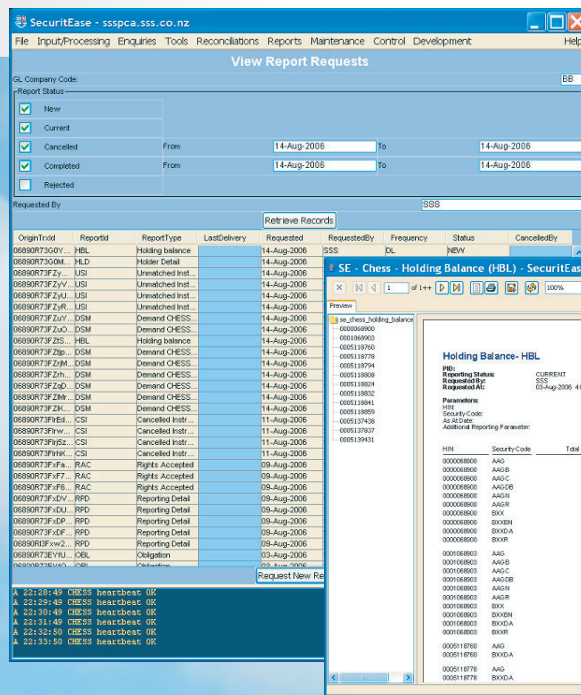
Reports

The SecuritEase® CHES Gateway has a comprehensive library of statistical, message, user and audit reports and provides full access to the standard reports transmitted via CHES.

You can schedule any report for automatic production at specified times and automatically e-mail those reports to nominated recipients.

We provide secure read access to all of the data in the SecuritEase® CHES Gateway database so you can write your own customised reports if required and add them to the Gateway report library.

Reports run interactively are initially displayed on the screen, but can be printed or saved to disk in different file formats (PDF, PS, RTF, XLS, HTML, CSV and XML).



Double click on the CHES report management screen to display a specific CHES report.



ASX CHES Accreditation

The SecuritEase® CHES Gateway has been fully accredited to the latest and most exacting ASX technical and functionality standards.

CHES version 4 release 6.1 functionality accreditation was granted by ASX on the 7th of August 2006.



ASX Communication

The SecuritEase® CHES Gateway maintains a continuous connection to CHES thereby enabling messages to be sent and received in real-time. This means that there is no need for delay and the latest information is always at your fingertips.

Communicate with CHES by using the SecuritEase® CHES Gateway Application Programming Interface (API), interactively via its graphical user interface, or compile messages into batch files and have the gateway automatically load these for you.



Technology Platform

The SecuritEase® CHES Gateway has a three tier client-server architecture. The three tiers are; user interface, application functionality and database. All three tiers may be run on separate equipment or they may be condensed to run on a single piece of equipment.

The Graphical User Interface is a Java 1.6 application.

The SecuritEase® CHES Gateway application operates on the Microsoft Windows platform, using either PC or server hardware to meet your availability and cost requirements. The Gateway does not require dedicated hardware and can operate on the same equipment as existing applications.

Microsoft SQL Server 2000 or 2005 is required for the database operations of the SecuritEase® CHES Gateway.

The SecuritEase® CHES Gateway performs the encryption needed for connection to ASX in software, so no additional third party hardware or software is needed. The encryption system has been fully accredited to the latest ASX standard.

Industry standard Crystal Reports Developer is used to design and construct report templates. Crystal Clear is used to obtain input from the user, run the report and format the output accordingly.



SecuritEase®
www.securitease.com.au